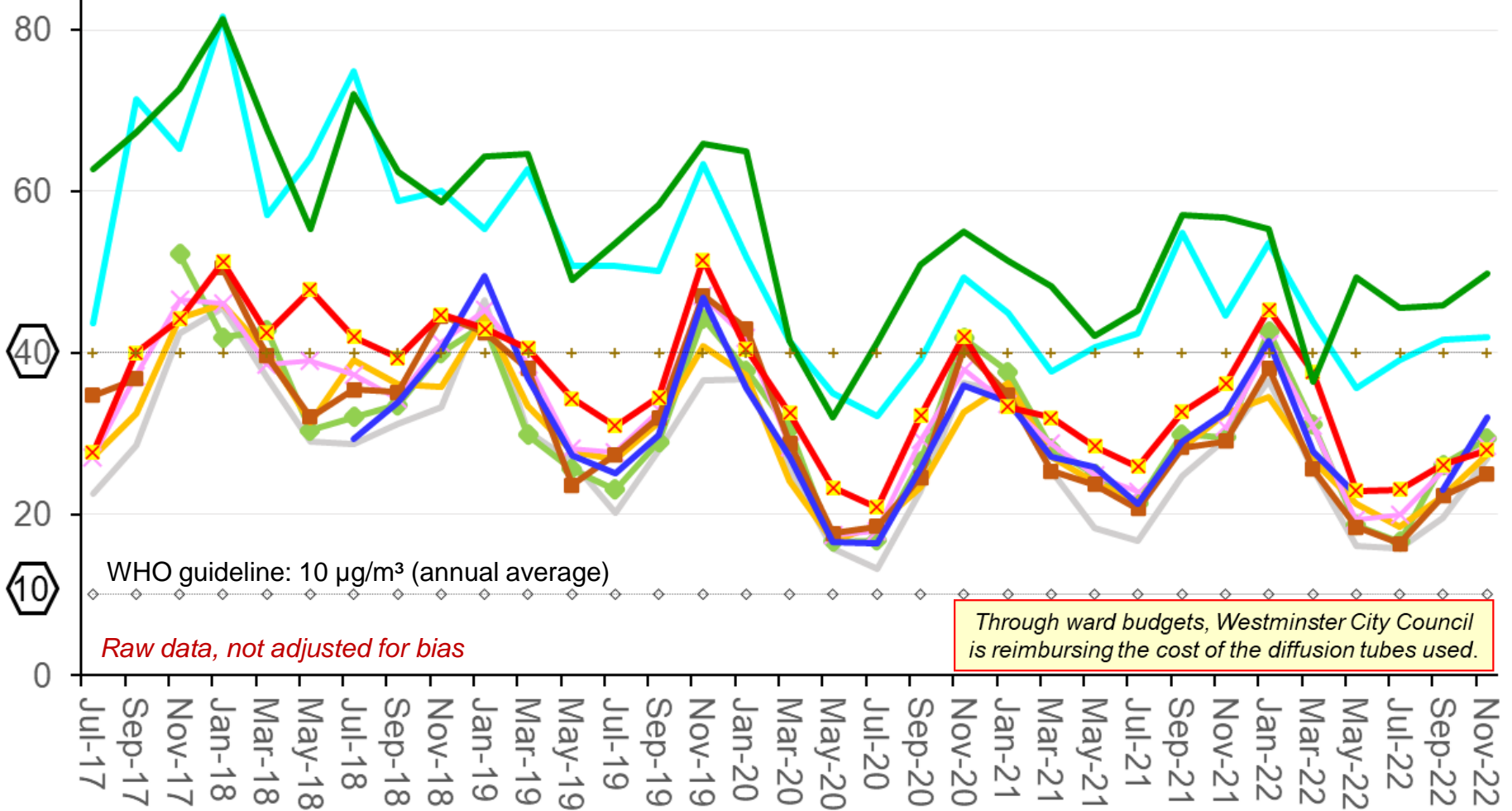


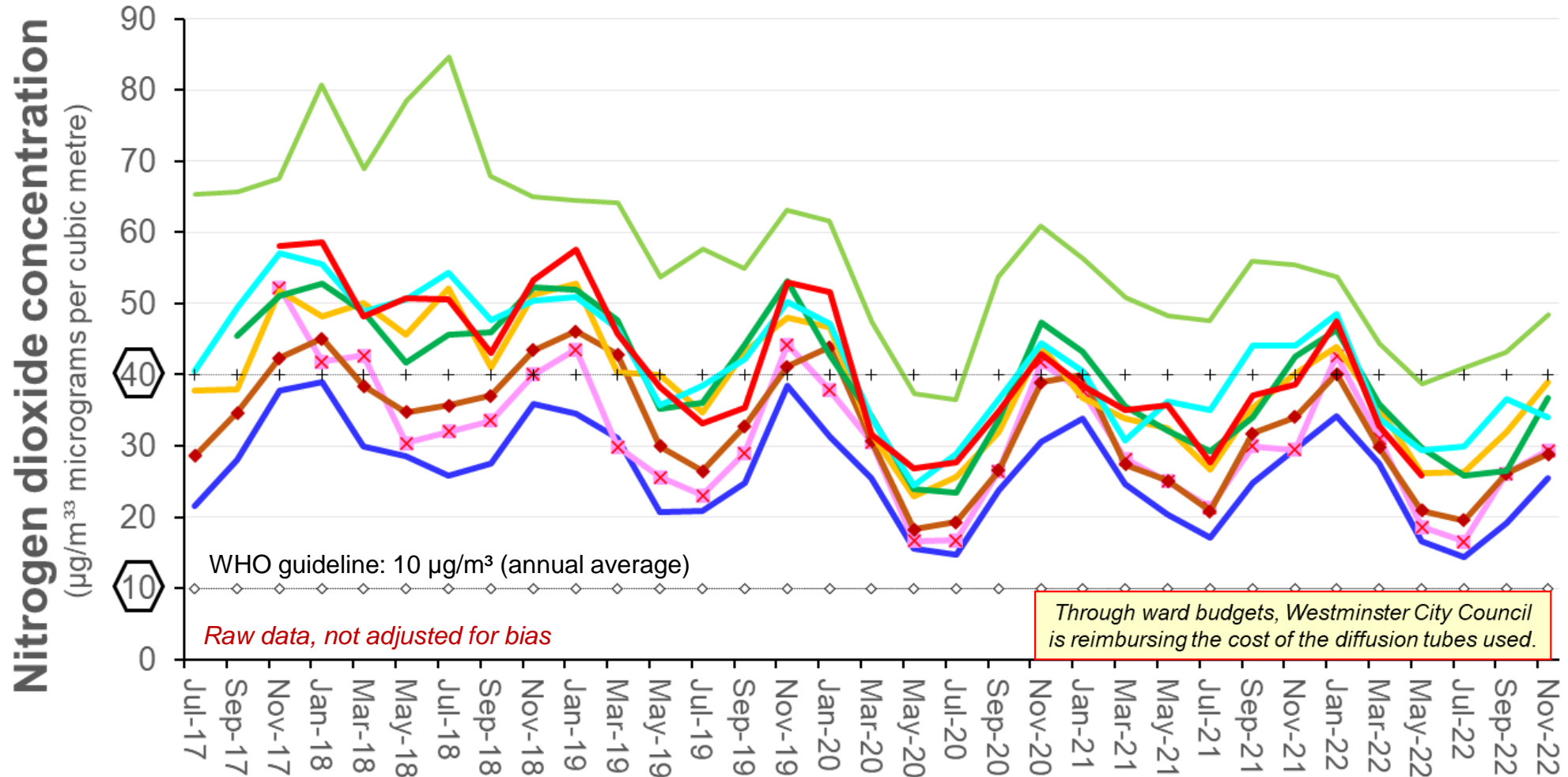
# Schools

**Nitrogen dioxide concentration**  
( $\mu\text{g}/\text{m}^3$  micrograms per cubic metre)

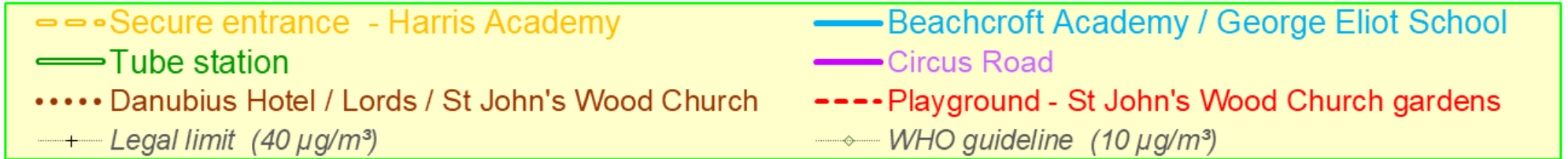
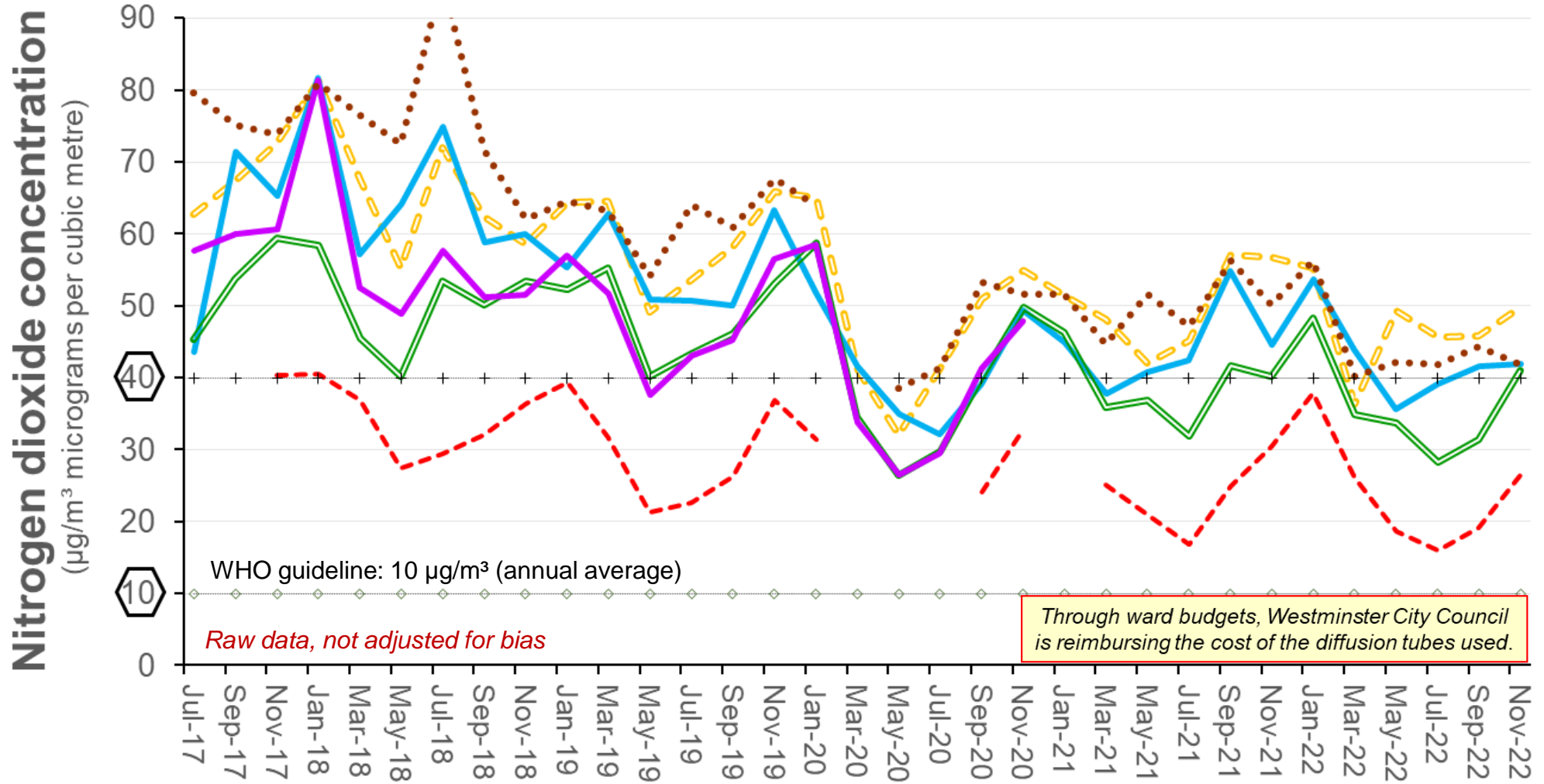


- Harris Academy / Marlborough Hill
- Robinsfield School / Acacia Road
- Barrow Hill Road / St John's Wood High Street
- Arnold House / Synagogue / St J & E Hospital
- Harris Academy (secure entrance)
- Abercorn School
- American School in London / Marlborough Place
- St Christina's School
- Beachcroft Academy / George Eliot School
- Legal limit (40  $\mu\text{g}/\text{m}^3$ )

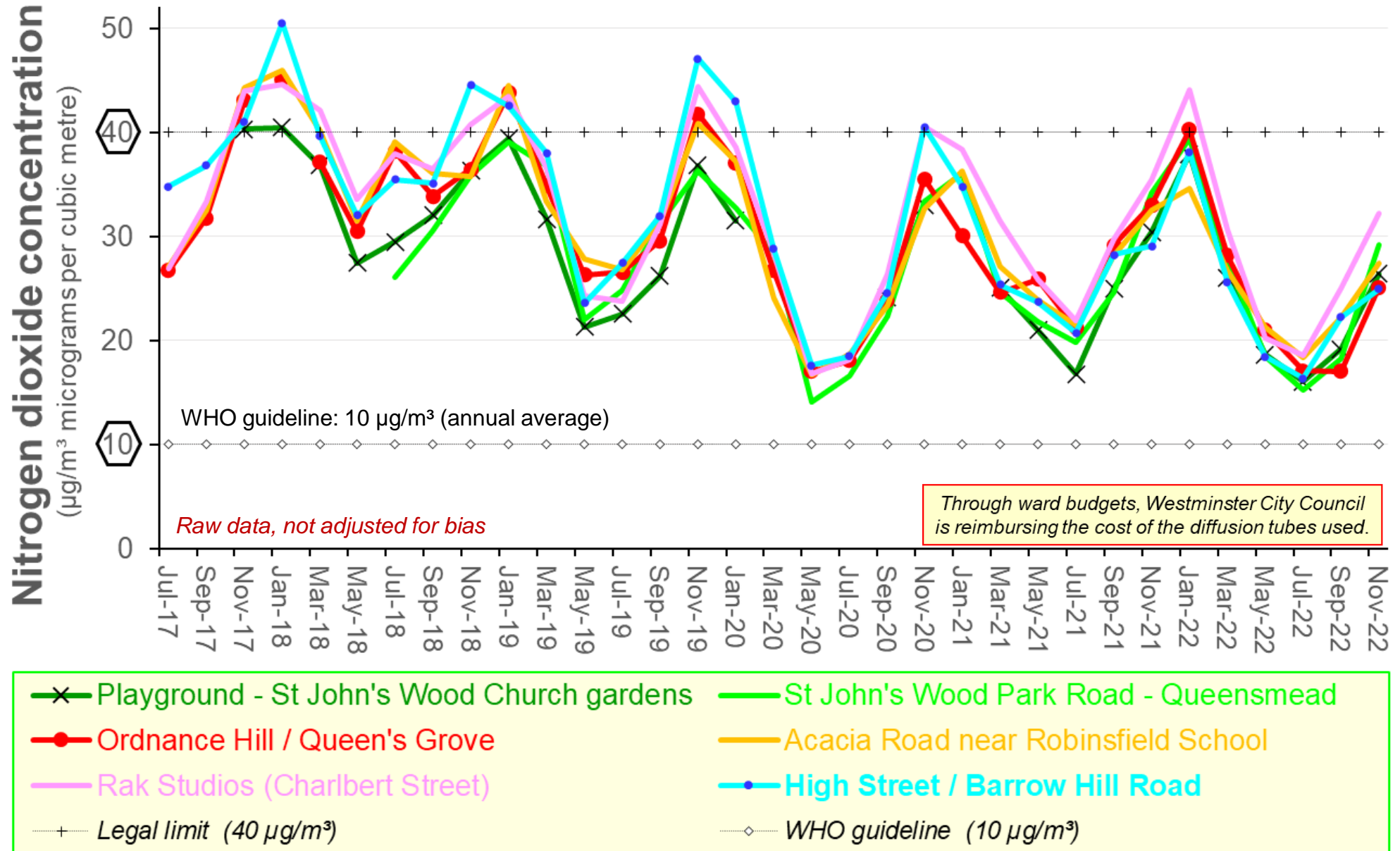
# Abbey Road to Maida Vale



# Finchley Road - Wellington Road



# Central sites



# Avenue Road and neighbourhood

